

*Auto-Chlor*  
SYSTEM

# A4 WaterSaver™

Single Rack • In Line • Low Energy Dishmachine

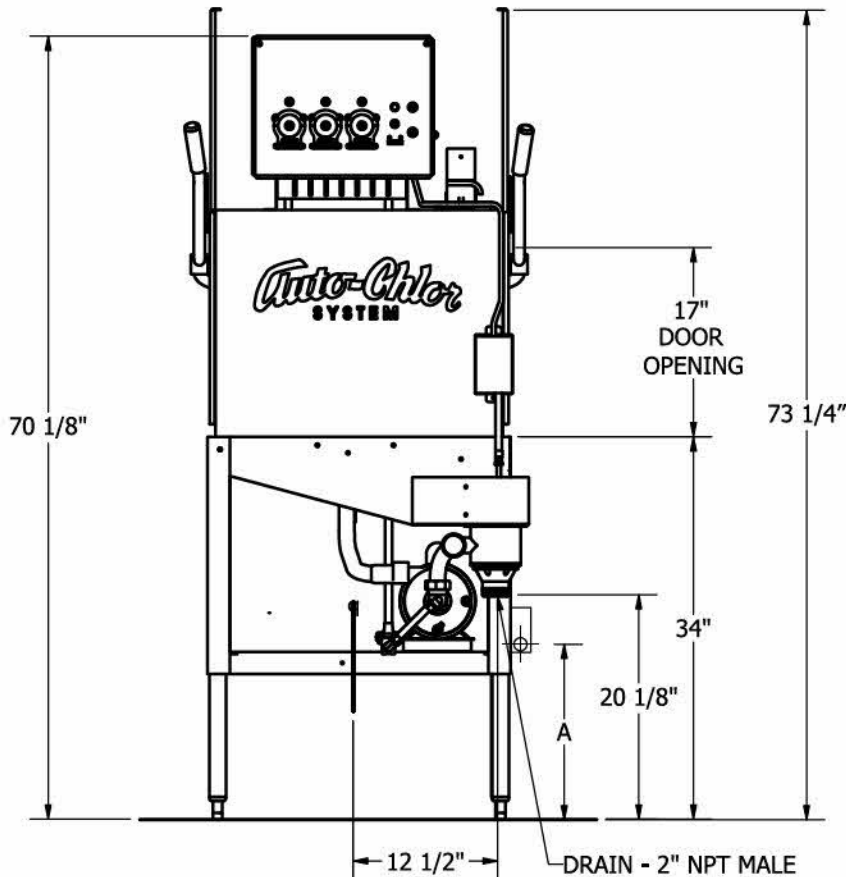


## WaterSaver™

- ◆ **Lowest Water Usage**  
1.09 gal/cycle
- ◆ **Low Energy**
- ◆ **Durable Construction**
- ◆ **Simple Maintenance**
- ◆ **Routine Service**
- ◆ **37 Racks Per Hour Capacity**

**Total Service.  
Total Satisfaction.**  
For more information, visit us  
at [www.auto-chlor.com](http://www.auto-chlor.com)





A: OPTIONAL SCRAP ACCUMULATOR DRAIN HEIGHT 15 1/2"

### Installation Specifications

Hot Water Inlet - 1/2" NPT female

45 gallons per hour @ 140°F, 7 GPM  
(recommended water temperature)

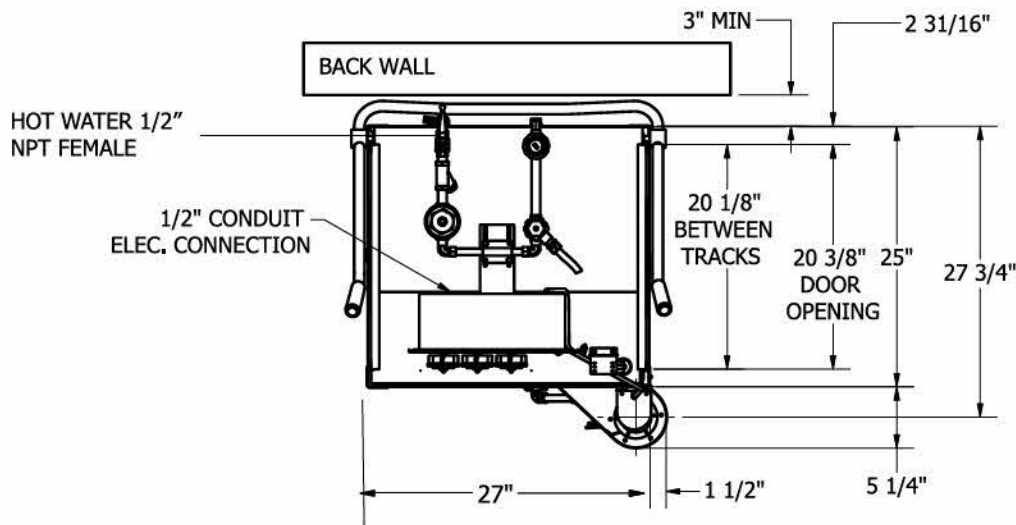
Electrical Requirement  
115 VAC, 60Hz, 1 Ph, 20 A

Table Height at Machine Entrance - 34"

Drain Connection with Scrap  
Accumulator - 2" NPT

Drain Connection without Scrap  
Accumulator - 2" NPT

NOTE: This unit does not produce  
steam or heat.



**Total Service.  
Total Satisfaction.**